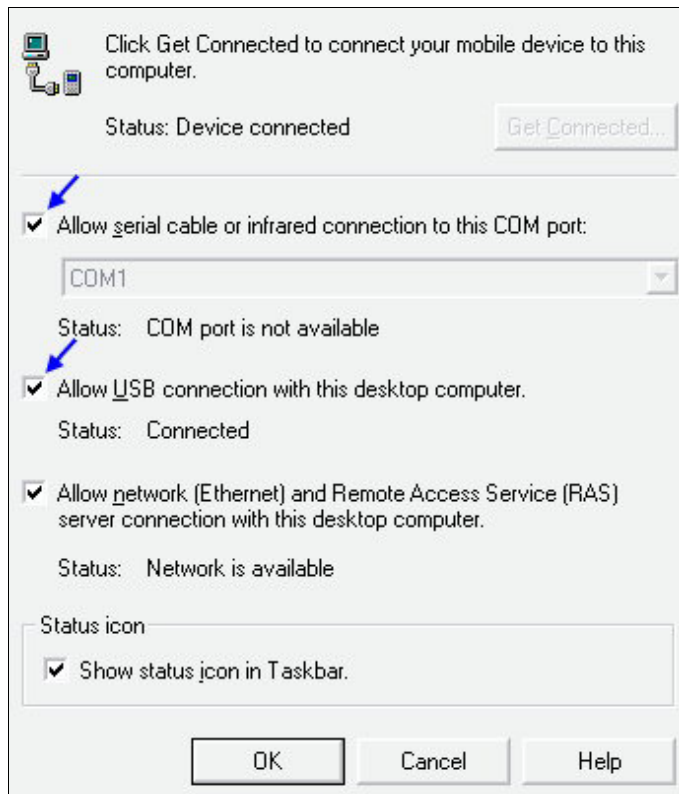


## **PPC6601 Software Upgrade Utility**

Welcome to the PPC6601 Software Upgrade Utility. This program will take you through the installation of the software update.

Before you continue, please ensure that the following items have been completed:

1. Ensure that your personal data on the device, such as Contacts, Inbox, and Tasks are backed up prior to initiating the update. Please see 'PPC6601 Data Backup and Restore' document for instructions.
2. Perform a soft reset on your device. This can be done by pressing the 'reset' button located on the bottom of the device next to the serial port.
3. Connect the device to an AC power source via the USB cradle. Plugging the AC charger into the cradle and into an AC power outlet can do this.
4. Close all other applications on your device and PC.
5. Sync your device with your PC via ActiveSync using the USB cradle. Make sure "Allow USB connection with this desktop computer" is checked as shown below. Ensure that the ActiveSync connection is "solid green"



6. Download the RUU file to your desktop. After successful download of the upgrade package from the web, execute it to begin the upgrade process. As shown below, follow the instructions to upgrade your device.





**Welcome to the device Software Update Utility**

This program will take you through the installation of the software update.

Before you continue, please ensure that:

1. Perform a normal reset by pressing the reset button then connect device to an AC power source via the cradle/cable.
2. Your device is also synchronised with your PC via ActiveSync and the USB/Serial cable/cradle. Depending on your settings, please check that some of your personal data, such as contacts, emails and tasks are backed up.
3. Close all other applications on the device and host PC.

Click Next to continue. Click Cancel to quit.

**NOTE: AC Power must be plugged in during upgrade**



Your device software is about to be update from :

Device CE image version : 2.03.00

Device Extended image version : 2.03.111

Device Radio image version : HA01\_140

To :

CE image version : 2.03

Extended image version : 2.03.111

Radio image version : HA01\_140

While the update is in progress, your device will act as though it is outside of network coverage. So, all your calls will be diverted to your Answer Phone, and any messages will be delivered once the update is completed.

Please click Update to continue.

7. There are 3 stages in the software upgrade process, as shown below. It will take approximately 20 minutes to complete all three stages.



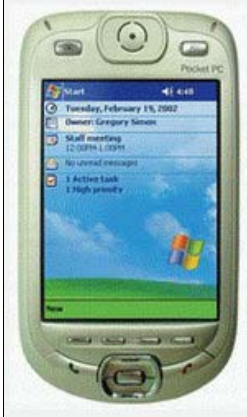
Stage1: Upgrading radio. Please wait ...

11 %

The current ROM image is now being updated from your device. The process will take approximately 20 minutes with usb connection and 90 min with serial connection.

**Remember, please don't disconnect your device from your PC or the power supply until the upgrade is complete.**

### Stage 1



Stage2: Updating extended ROM. Please wait ...

3 %

The current ROM image is now being updated from your device. The process will take approximately 20 minutes with usb connection and 90 min with serial connection.

**Remember, please don't disconnect your device from your PC or the power supply until the upgrade is complete.**

### Stage 2




Stage3: Updating CE ROM image. Please wait ...

1 %

The current ROM image is now being updated from your device. The process will take approximately 20 minutes with usb connection and 90 min with serial connection.

**Remember, please don't disconnect your device from your PC or the power supply until the upgrade is complete.**

### Stage 3.



**Congratulations**

You have now almost completed your device software update.

To finish, please complete the following important steps:

1. Take your device out of the cradle so that it is no longer connected to your PC or the power source - don't be alarmed if the screen looks strange.
2. Cold boot system(Press On/Off button and reset at the same time as left picture show).

You can now continue to use your device as usual, with the increased benefits of the updated software.

Click Finish to exit this program.

8. Once the update is complete, you will need to perform a hard reset. This can be done by pressing the reset button located on the bottom of the device next to the serial port, while simultaneously holding down the power button.

Congratulations! You have now completed your device software upgrade.